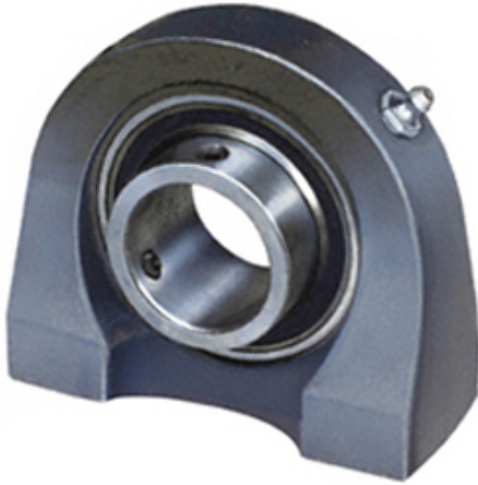




# Shanghai Sunpace Machinery Co., Ltd.



TPB250W X 3/4 Bearing 2D drawings and 3D CAD models

0.75 Inch | 19.05 Millimeter x 1.22 Inch | 31 Millimeter x 1.313 Inch | 33.35 Millimeter HUB CITY TPB250W X 3/4 Pillow Block Bearings

Bearing No. TPB250W X 3/4

Category	Pillow Block Bearings
Inventory	0.0
Manufacturer Name	REGAL BELOIT
Minimum Buy Quantity	N/A
Weight	0.41
EAN	0662798251417
Product Group	M06110
Number of Mounting Holes	2
Mounting Method	Set Screw
Housing Style	2 Bolt Tap Base Pillow Block
Rolling Element	Ball Bearing
Housing Material	Cast Iron
Expansion / Non-expansion	Non-expansion
Mounting Bolts	3/8 Inch
Relubricatable	Yes
Insert Part Number	B250
Seals	Nitrile Rubber
Housing Configuration	1 Piece Solid
Inch - Metric	Inch
Other Features	Single Row   Spherical   Wide Inner Race   Has Trash Guard
Long Description	2 Bolt Tap Base Pillow Block; 3/4" Bore; 1-5/16" Base to Center Height; Set Screw Mount; Ball Bearing;



## Shanghai Sunpace Machinery Co., Ltd.

	Relubricatable; Cast Iron; Nitrile Rubber; Non-expansion
Category	Pillow Block
UNSPSC	31171511
Harmonized Tariff Code	8483.20.40.40
Noun	Bearing
Keyword String	Pillow Block
Manufacturer URL	<a href="http://www.hubcityinc.com">http://www.hubcityinc.com</a>
Manufacturer Item Number	1001-05703
Manufacturer Internal Number	25141
Weight / LBS	0.9
d	0.75 Inch   19.05 Millimeter
Bolt Spacing Maximum	0 Inch   0Millimeter
Actual Bolt Center to Center	2 Inch   52Millimeter
Bolt Spacing Minimum	0 Inch   0Millimeter
Nominal Bolt Center to Center	2 Inch   52 Millimeter
B	1.313 Inch   33.35 Millimeter
D	1.22 Inch   31 Millimeter